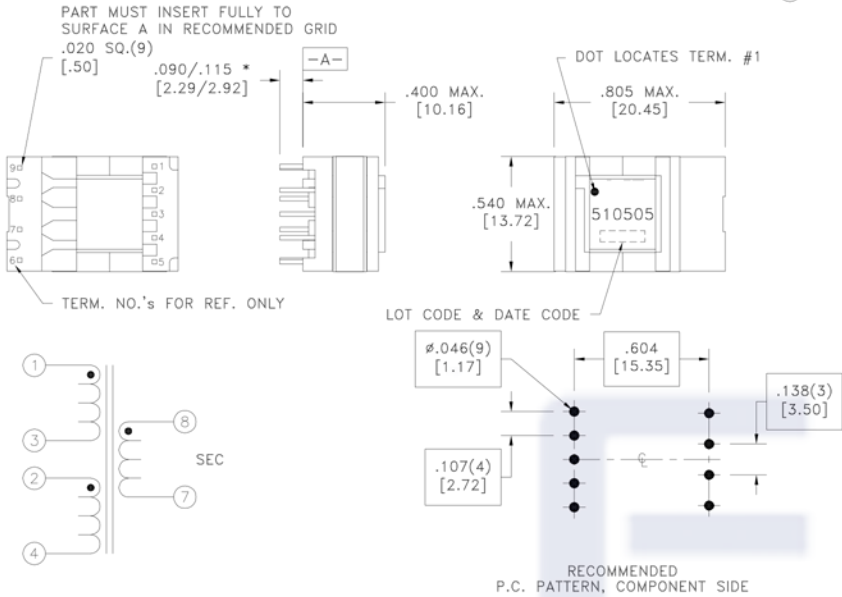


CUSTOMER TERMINAL	RoHS	LEAD(Pb)-FREE
Sn96%, Ag4%	Yes	Yes



* DIMENSION MAY BE EXCEEDED WITH SOLDER ONLY 6B



ELECTRICAL SPECIFICATIONS @ 25°C unless otherwise noted:

PARAMETER	TEST CONDITIONS	VALUE
D.C. RESISTANCE	1-3 @20°C	0.050 ohms max.
D.C. RESISTANCE	2-4 @20°C	0.035 ohms max.
D.C. RESISTANCE	7-8 @20°C	0.125 ohms max.
INDUCTANCE	1-4 tie(2+3), 100kHz, 100mVAC, Ls	870uH ±30%
LEAKAGE INDUCTANCE	1-4 tie(2+3, 7+8), 100kHz, 10mVAC, Ls	600nH typ., 1.5uH max.
DIELECTRIC	1-8 tie(2+3), 5000VAC, 1 second	4000VAC, 1 minute
TURNS RATIO	(1-4):(8-7), tie(2+3)	1:1, ±1%

GENERAL SPECIFICATIONS:

Designed to comply with the following requirements as defined by IEC60950-1, EN60950-1, UL60950-1/CSA60950-1 and AS/NZS60950.1:
 - Reinforced insulation for a primary circuit at a working voltage of 400VDC.

Wire insulation & RoHS status not affected by wire color.
 Wire insulation color may vary depending on availability.

REV.	DATE	Packaging Specifications Method: Tray PKG-0730		Tolerances unless otherwise specified: Angles: ±1° Decimals: ±.005 [.13] Fractions: ±1/64 Footprint: ±.001 [.03]	DRAWING TITLE TRANSFORMER	PART NO. FKS750510505
6B	8/15			This drawing is dual dimensioned. Dimensions in brackets are in millimeters.	eiSos p/n: FKS750510505	
6A	5/14					SPECIFICATION SHEET 1 OF 1

