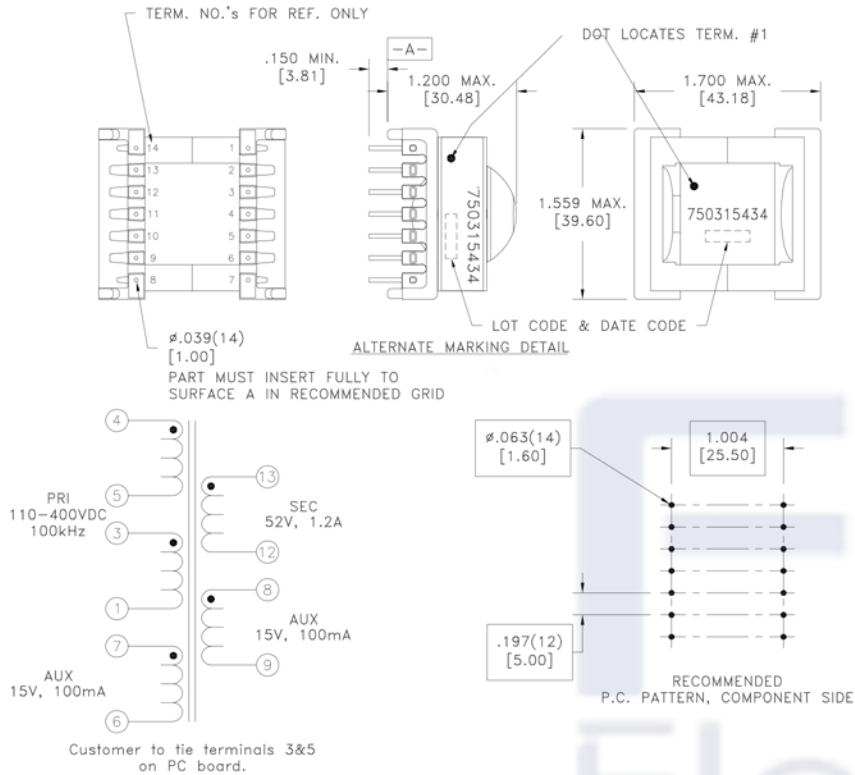


CUSTOMER TERMINAL	RoHS	LEAD(Pb)-FREE
Sn96%, Ag4%	Yes	Yes



ELECTRICAL SPECIFICATIONS @ 25°C unless otherwise noted:

PARAMETER	TEST CONDITIONS	VALUE
6B D.C. RESISTANCE	4-1 tie(3+5), @20°C	0.220 ohms ±15%
6B D.C. RESISTANCE	13-12 @20°C	0.020 ohms ±20%
D.C. RESISTANCE	8-9 @20°C	0.085 ohms ±10%
D.C. RESISTANCE	7-6 @20°C	0.085 ohms ±10%
INDUCTANCE	4-1 tie(5+3), 10kHz, 100mVAC, Ls	640uH ±10%
SATURATION CURRENT	4-1 tie(5+3), 20% rolloff from initial	3.6A
LEAKAGE INDUCTANCE	4-1 tie(5+3, 6+7, 8+9, 12+13,). 100kHz, 100mVAC, Ls	12.0uH typ., 24.0uH max.
DIELECTRIC	1-13 tie(3+5+6, 12+9), 3750VAC, 1 second	3000VAC, 1 minute
DIELECTRIC	5-6 tie(4+3), 625VAC, 1 second	-
TURNS RATIO	(4-5):(3-1)	1.25:1, ±1%
TURNS RATIO	(4-1):(13-12), tie(5+3)	4.5:1, ±1%
TURNS RATIO	(4-1):(8-9), tie(5+3)	15.75:1, ±1%
TURNS RATIO	(4-1):(7-6), tie(5+3)	15.75:1, ±1%

GENERAL SPECIFICATIONS:

OPERATING TEMPERATURE RANGE: -40°C to +125°C including temp rise.

Designed to comply with the following requirements as defined by IEC60950-1, EN60950-1, UL60950-1/CSA60950-1 and AS/NZS60950.1:

- Reinforced insulation for a primary circuit at a working voltage of 277Vrms, 400Vpeak, Overvoltage Category II.

Wire insulation & RoHS status not affected by wire color.
Wire insulation color may vary depending on availability.

REV.	DATE	Packaging Specifications Method: Tray PKG-0904		Tolerances unless otherwise specified: Angles: ±1° Fractions: ±1/64 Decimals: ±.005 [.13] Footprint: ±.001 [.03]	DRAWING TITLE TRANSFORMER	PART NO. FKS750315434
6B	7/19			This drawing is dual dimensioned. Dimensions in brackets are in millimeters.	eiSos p/n: FKS750315434	
6A	1/16					compliant RoHS SPECIFICATION SHEET 1 OF 1