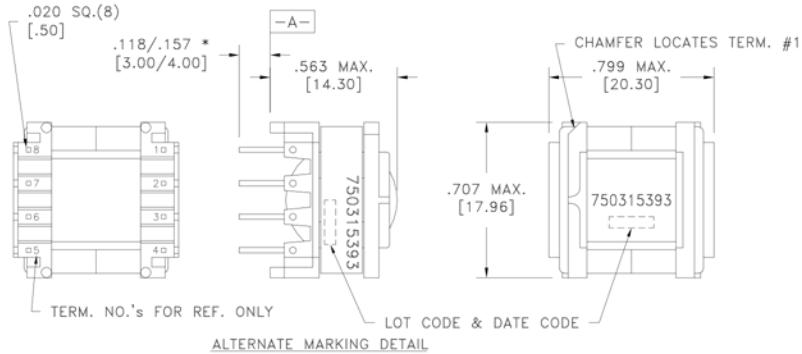


CUSTOMER TERMINAL	RoHS	LEAD(Pb)-FREE
Sn96%, Ag4%	Yes	Yes

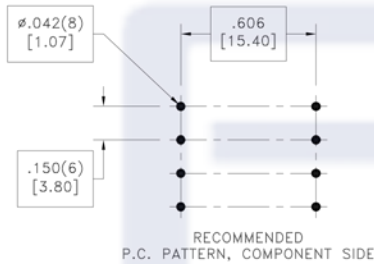
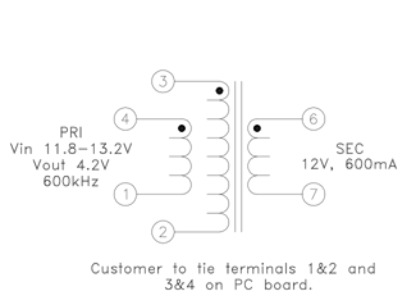


PART MUST INSERT FULLY TO SURFACE A IN RECOMMENDED GRID .020 SQ.(8) [1.50] \* DIMENSION MAY BE EXCEEDED WITH SOLDER ONLY



ELECTRICAL SPECIFICATIONS @ 25°C unless otherwise noted:

PARAMETER	TEST CONDITIONS	VALUE
D.C. RESISTANCE	3-2 tie(1+2, 3+4), @20°C	0.046 ohms ±30%
D.C. RESISTANCE	6-7 @20°C	0.280 ohms ±10%
INDUCTANCE	3-2 tie(1+2, 3+4), 10kHz, 100mVAC, Ls	37.5uH ±10%
SATURATION CURRENT	3-2 tie(1+2, 3+4), 20% rolloff from initial	3.0A
LEAKAGE INDUCTANCE	3-2 tie(1+2, 3+4, 6+7), 100kHz, 10mVAC, Ls	200nH typ., 400nH max.
DIELECTRIC	4-6 tie(1+2), 1875VAC, 1 second	1500VAC, 1 minute
TURNS RATIO	(6-7):(3-2), tie(1+2, 3+4)	3:1, ±1%



GENERAL SPECIFICATIONS:

OPERATING TEMPERATURE RANGE: -40°C to +125°C including temp rise.

Designed to comply with the following requirements as defined by IEC60950-1, EN60950-1, UL60950-1/CSA60950-1 and AS/NZS60950.1:

- Functional insulation for a primary circuit at a working voltage of 265Vrms, 400Vpeak, Overvoltage Category II.

Wire insulation & RoHS status not affected by wire color.  
Wire insulation color may vary depending on availability.

REV.	DATE	Packaging Specifications Method: Tray PKG-0690		Tolerances unless otherwise specified: Angles: ±1°      Decimals: ±.005 [.13] Fractions: ±1/64      Footprint: ±.001 [.03]	DRAWING TITLE <b>TRANSFORMER</b>	PART NO. FKS750315393
6A	1/16			This drawing is dual dimensioned. Dimensions in brackets are in millimeters.	eiSos p/n: FKS750315393	SPECIFICATION SHEET 1 OF 1