

CUSTOMER TERMINAL	RoHS	LEAD(Pb)-FREE
Sn96%, Ag4%	Yes	Yes



ELECTRICAL SPECIFICATIONS @ 25°C unless otherwise noted:

PARAMETER	TEST CONDITIONS	VALUE
D.C. RESISTANCE	3-1 @20°C	1.350 ohms ±10%
D.C. RESISTANCE	5-4 @20°C	0.245 ohms ±10%
D.C. RESISTANCE	10-13 tie(10+11, 13+14), @20°C	0.010 ohms max.
D.C. RESISTANCE	8-13 tie(10+11, 13+14), @20°C	0.033 ohms max.
INDUCTANCE	3-1 10kHz, 100mVAC, Ls	850uH ±10%
SATURATION CURRENT	3-1 20% rolloff from initial	1.1A
LEAKAGE INDUCTANCE	3-1 tie(4+5, 8+10+11+13+14), 100kHz, 100mVAC, Ls	12.5uH typ., 25.0uH max.
DIELECTRIC	1-14 tie(3+4, 10+11), 3750VAC, 1 second	3000VAC, 1 minute
DIELECTRIC	1-5 625VAC, 1 second	-
TURNS RATIO	(3-2):(2-1)	1:1, ±1%
TURNS RATIO	(3-1):(5-4)	5:1, ±1%
TURNS RATIO	(3-1):(10-13), tie(10+11, 13+14)	20:1, ±2%
TURNS RATIO	(3-1):(8-13), tie(10+11, 13+14)	8.89:1, ±1%

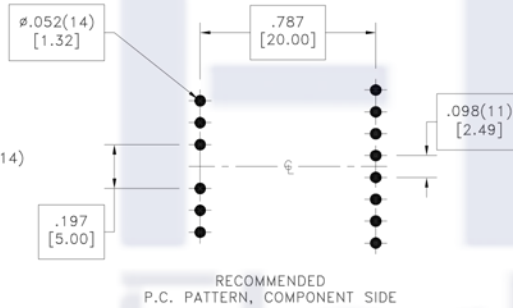
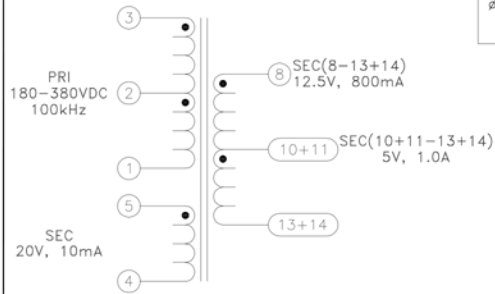
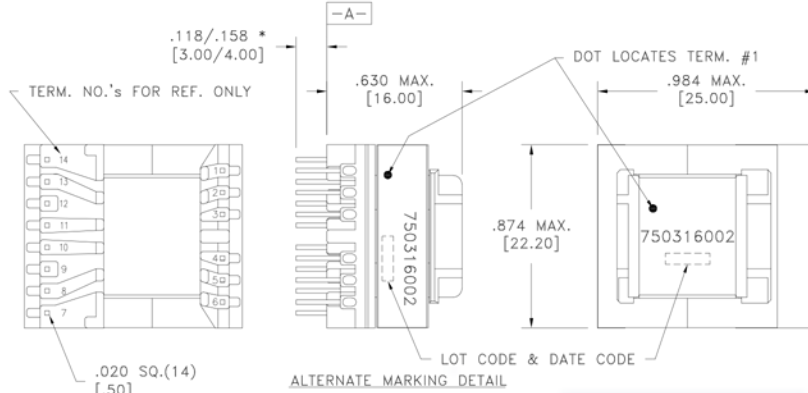
GENERAL SPECIFICATIONS:

OPERATING TEMPERATURE RANGE: -40°C to +125°C including temp rise.

Designed to comply with the following requirements as defined by IEC60950-1, EN60950-1, UL60950-1/CSA60950-1 and AS/NZS60950.1:

- Reinforced insulation for a primary circuit at a working voltage of 265Vrms, 400Vpeak, Overvoltage Category II.

* DIMENSION MAY BE EXCEEDED WITH SOLDER ONLY



Customer to tie terminals 10+11 and 13+14 on PC board.

Application of the transformer allows for the leadwires between terminals 10&11 and 13&14 to solder bridge.

Wire insulation & RoHS status not affected by wire color.
Wire insulation color may vary depending on availability.

REV.	DATE	Packaging Specifications Method: Tray PKG-0736		Tolerances unless otherwise specified: Angles: ±1° Fractions: ±1/64 Decimals: ±.005 [.13] Footprint: ±.001 [.03]	DRAWING TITLE TRANSFORMER	PART NO. FKS750316002
6A	9/17		CONVENTION PLACEMENT	This drawing is dual dimensioned. Dimensions in brackets are in millimeters.	eiSos p/n: FKS750316002	SPECIFICATION SHEET 1 OF 1