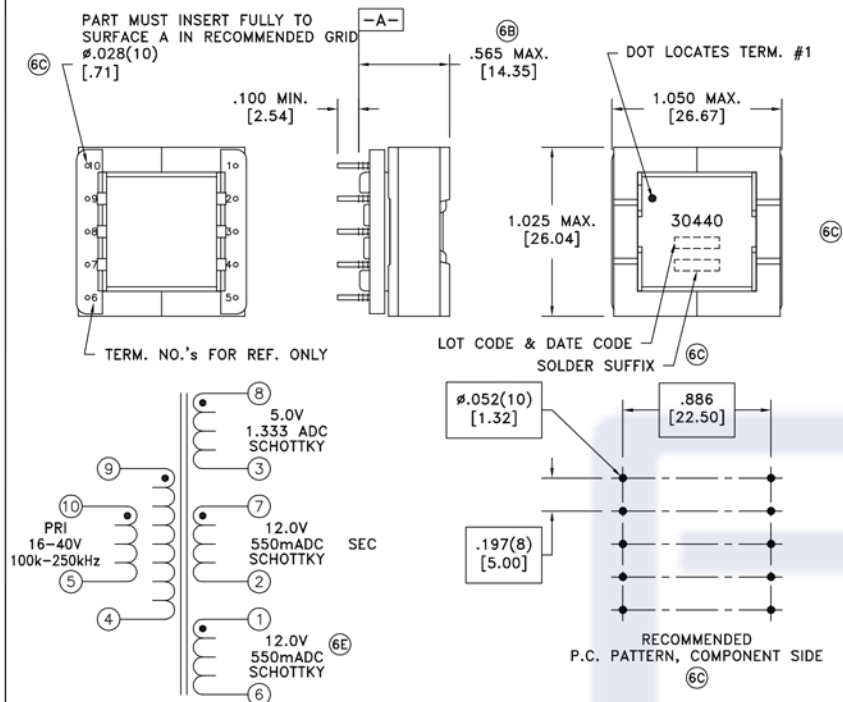


SOLDER SUFFIX	CUSTOMER TERMINAL	RoHS	LEAD(Pb)-FREE	6C
LF1	Sn96%, Ag4%	Yes	Yes	



ELECTRICAL SPECIFICATIONS @ 25°C unless otherwise noted:

PARAMETER	TEST CONDITIONS	VALUE
D.C. RESISTANCE	9-4 @20°C	0.107 ohms max.
D.C. RESISTANCE	1-6 @20°C	0.168 ohms max.
D.C. RESISTANCE	8-3 @20°C	0.027 ohms max.
D.C. RESISTANCE	7-2 @20°C	0.157 ohms max.
D.C. RESISTANCE	10-5 @20°C	0.135 ohms max.
INDUCTANCE	9-4 10kHz, 10mVAC, Ls	55.9uH ±5%
LEAKAGE INDUCTANCE	9-4 tie(8+3, 7+2, 1+6, 4+5, 10+9), 100kHz, 100mVAC, Ls	529nH typ.
DIELECTRIC	PRI-SEC 625VAC, 1 second	500VAC, 1 minute
URNS RATIO	(10-5):(9-4)	1:1, ±1%
URNS RATIO	(1-6):(9-4)	1.087:1, ±1%
URNS RATIO	(7-2):(9-4)	1.087:1, ±1%
URNS RATIO	(9-4):(8-3)	2.091:1, ±1%

GENERAL SPECIFICATIONS:

6C OPERATING TEMPERATURE RANGE: -40°C to +125°C including temp rise.

TRANSFORMER INFORMATION:

Pout max.: 20.00W
 Pout min.: 5.76W
 Estimated Temp. Rise @ Pout max.: 40.6°C
 Estimated Efficiency: 73.6%
 Estimated Maximum Duty Cycle: 44.8%

SWITCH SELECTION INFORMATION

Input Voltage Range: 16-40V
 Peak Current: 4.95A
 Vsw @ Rated Output Voltages: 52 + (Vmax - 40)
 Operating Frequency: 100k-250kHz

Transformer will operate in Discontinuous Mode below Minimum Specified Output Voltage of Pout Min.
 Pout min. varies with frequency of switcher (from 100 to 250kHz)
 Pout Min = 576.0/(Frequency in kHz) Watts.

REV.	DATE	Packaging Specifications
6E	10/13	Method: Tray
6D	2/13	PKG-0819
6C	2/12	
6B	11/97	

Tolerances unless otherwise specified:
 Angles: ±1° Decimals: ±.005 [.13]
 Fractions: ±1/64 Footprint: ±.001 [.03]

This drawing is dual dimensioned. Dimensions in brackets are in millimeters.

DRAWING TITLE
TRANSFORMER

eiSos p/n: FKS750030440

PART NO.
 FKS30440-LF1

compliant RoHS

SPECIFICATION SHEET 1 OF 1