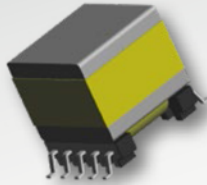


# EPQ13

## 10-Terminal, SMT, Horizontal



**NEW**



### Characteristics

- Surface mount
- Pick & placeable
- Core direction: horizontal
- Functional insulation

### Applications

- Lighting
- Metering
- PoE
- DC/DC converter
- Industrial controls
- White goods
- DSL
- Telecom
- CMC

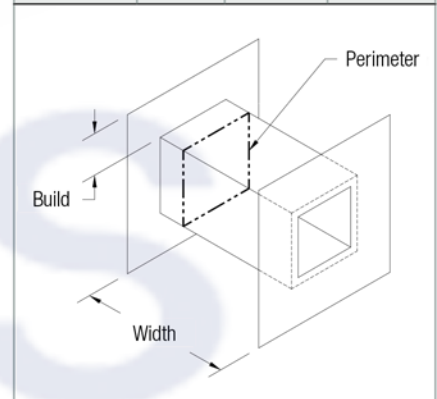
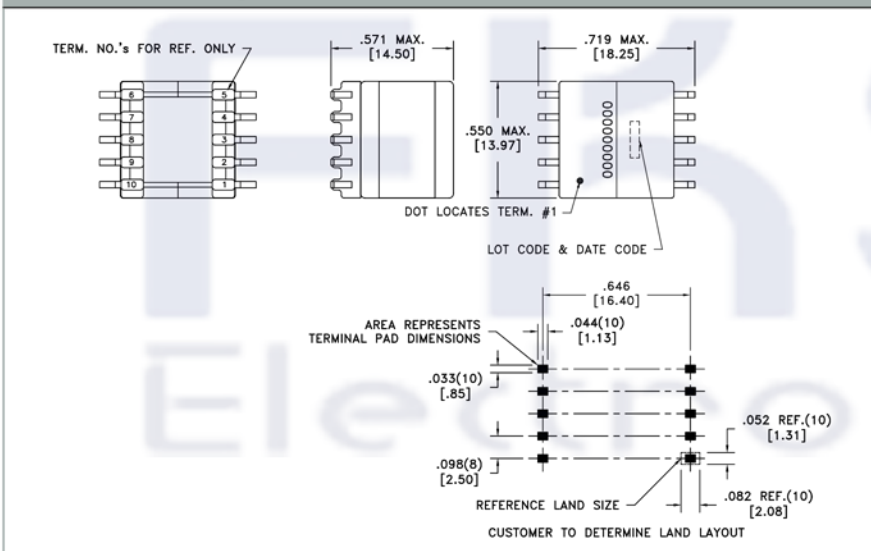
### Core Data

Core Part Number	Area ( $A_c$ ) (mm <sup>2</sup> )	Path Length ( $L_p$ ) (mm)	Volume ( $V_c$ ) (mm <sup>3</sup> )
150-3262	31.70	27.80	881.26

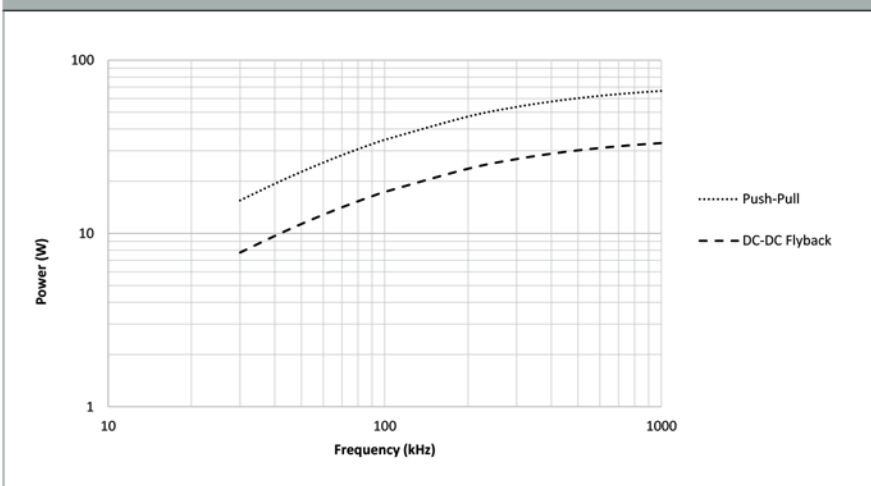
### Bobbin Winding Area

Bobbin Part Number	Width (mm)	Build (mm)	Perimeter (mm)
070-6389	7.65	1.80	26.95

### Dimensions & Footprint



### Estimated Maximum Power Level



### Models

**A** Altium Library

**E** Eagle Library

**S** STEP 3D Model

**I** IGS 3D Model

**W** WRL 3D Model