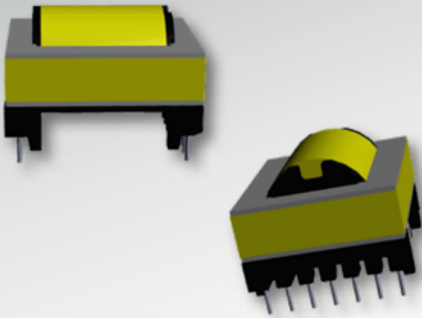


# ERL35

## 14-Terminal, THT, Horizontal



### Characteristics

- Through-hole
- Core direction: horizontal
- Functional & reinforced insulation

### Applications

- Offline
- Lighting
- DC/DC converter
- Industrial controls
- White goods
- Telecom
- PFC
- Charging
- Stand-by power

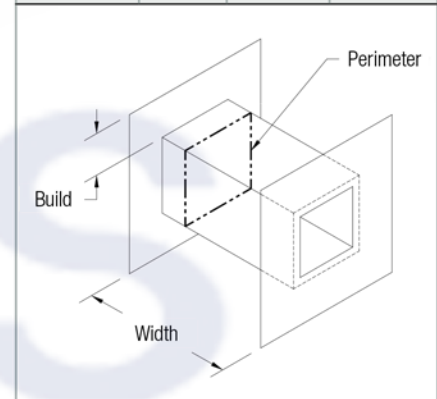
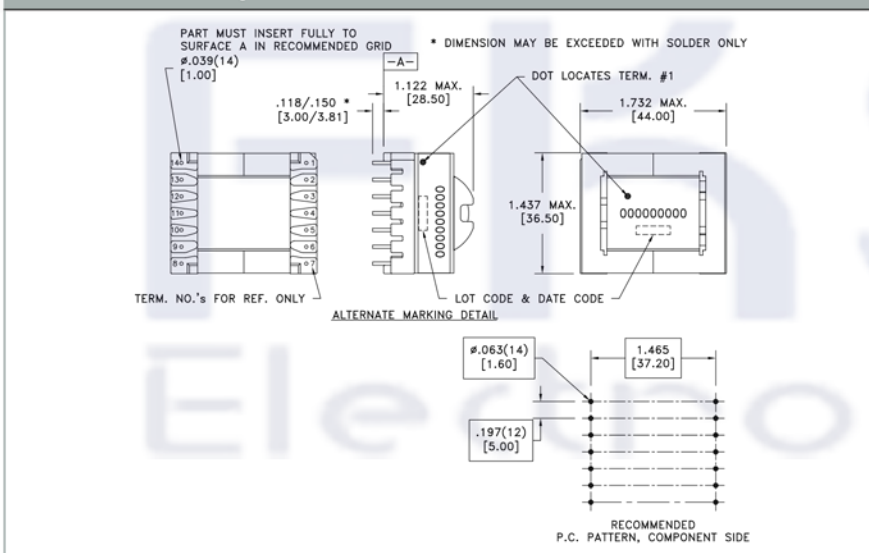
### Core Data

| Core Part Number | Area ( $A_c$ ) (mm <sup>2</sup> ) | Path Length ( $L_w$ ) (mm) | Volume ( $V_c$ ) (mm <sup>3</sup> ) |
|------------------|-----------------------------------|----------------------------|-------------------------------------|
| 150-2171         | 103.00                            | 92.70                      | 9548.10                             |

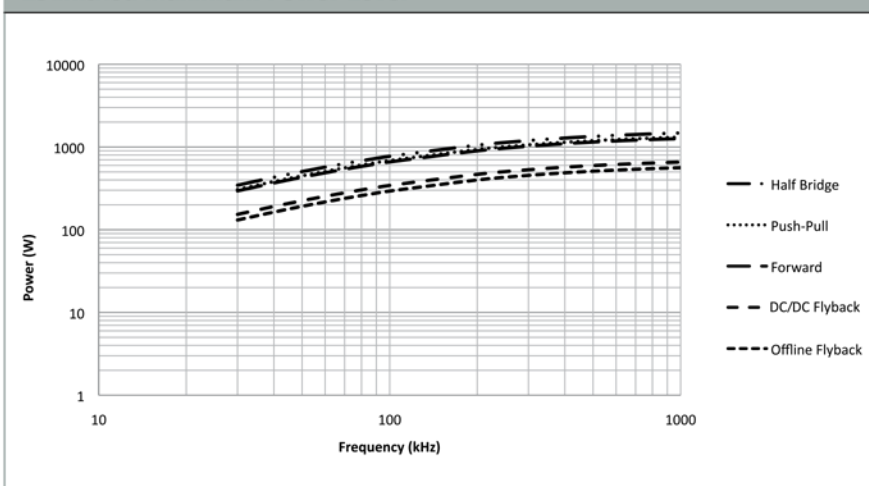
### Bobbin Winding Area

| Bobbin Part Number | Width (mm) | Build (mm) | Perimeter (mm) |
|--------------------|------------|------------|----------------|
| 070-5783           | 27.61      | 5.71       | 42.70          |

### Dimensions & Footprint



### Estimated Maximum Power Level



### Models

**A** Altium Library

**E** Eagle Library

**S** STEP 3D Model

**I** IGS 3D Model

**W** WRL 3D Model